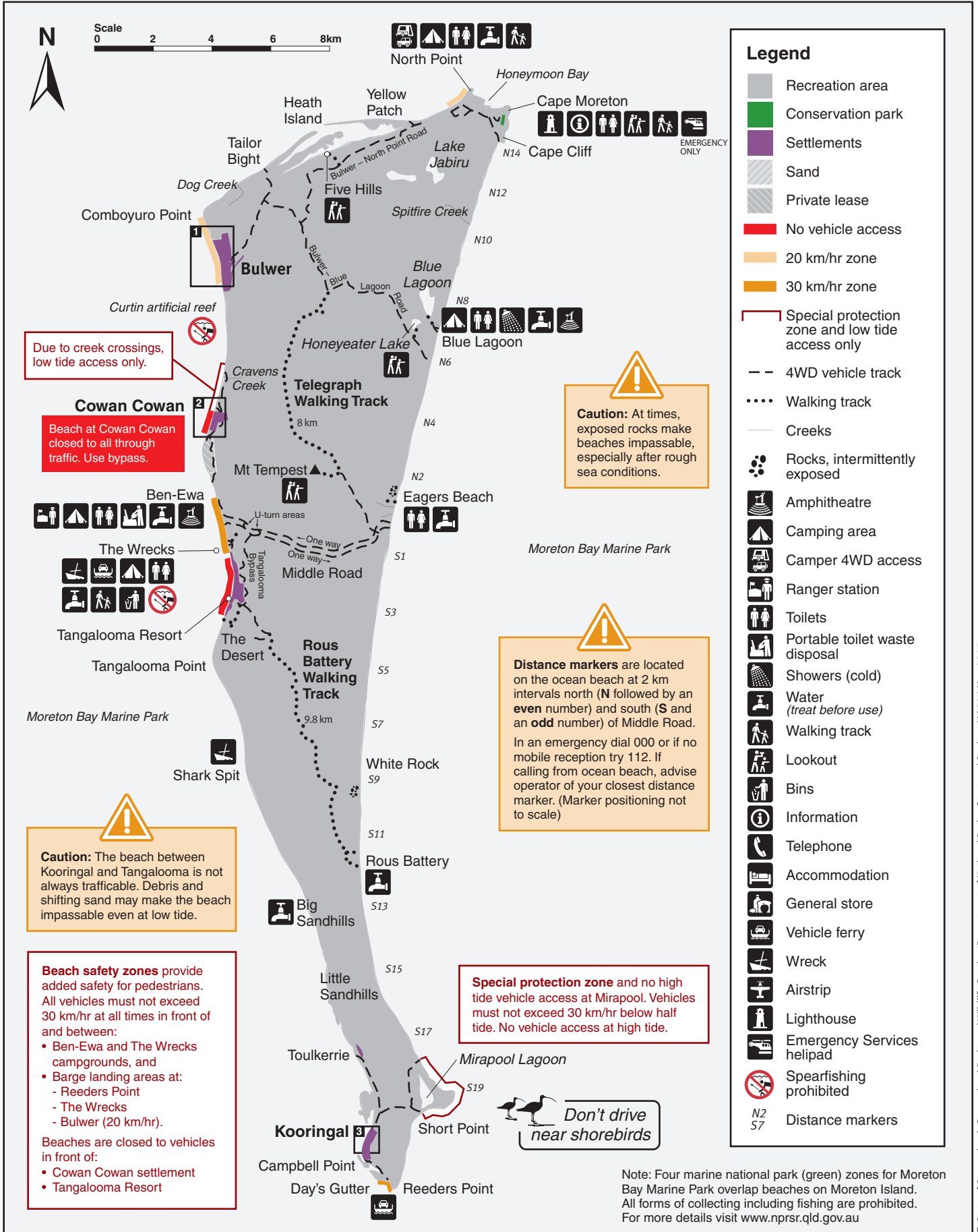
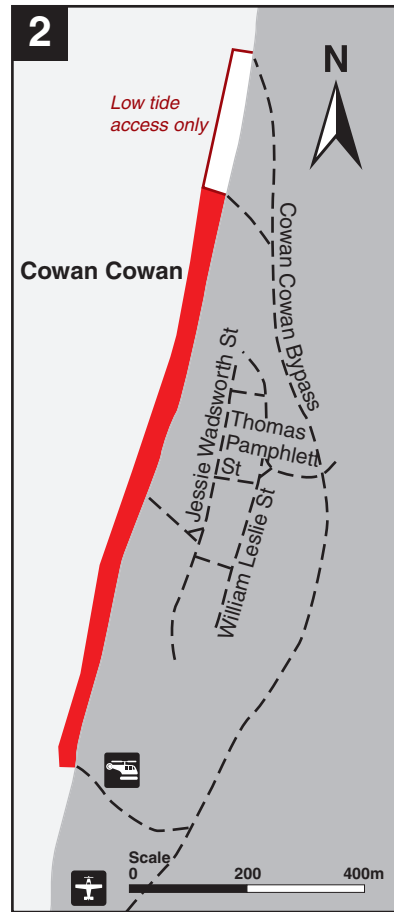
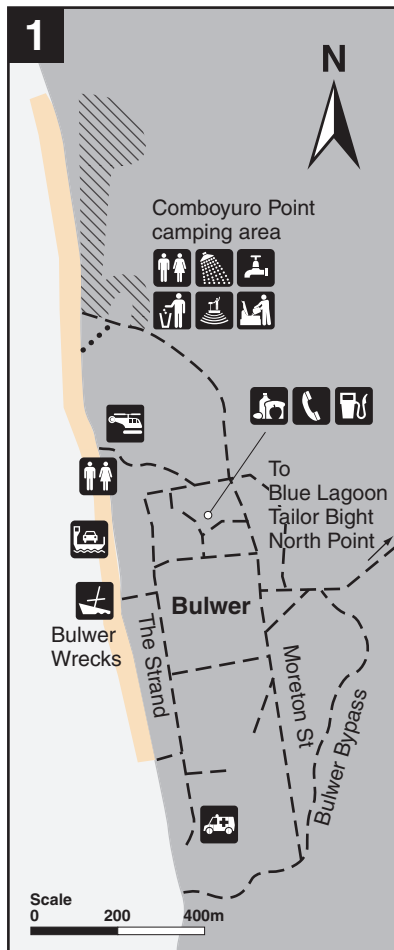


# Moreton Island National Park and Recreation Area map



For a more detailed map of the roads, walking tracks and highlights to see, visit <http://qtopo.dnrm.qld.gov.au/desktop/>

# Locality map and inset maps 1, 2 and 3



**Legend**

- Recreation area
- Camping area
- Water
- No vehicle access
- 20 km/hr zone
- Special protection zone and low tide access only
- 4WD vehicle track
- Walking track
- Toilets
- Showers (cold)
- Water (treat before use)
- General store
- Bins
- Portable toilet
- Waste disposal
- Petrol
- Amphitheatre
- Telephone
- Wreck
- Vehicle ferry
- Airstrip
- Emergency Services helipad

© State of Queensland. Queensland Parks and Wildlife Service, Department of National Parks, Sport and Racing. MA396 May 2017